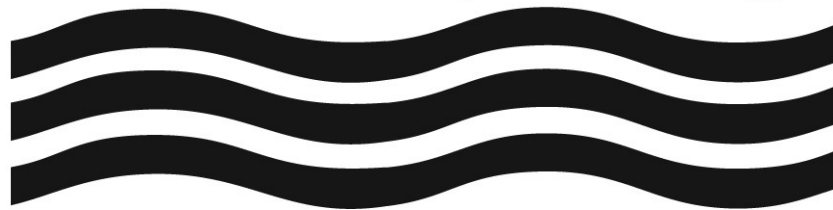


# Factbook 2009

---

**Three Rivers**  
Community College

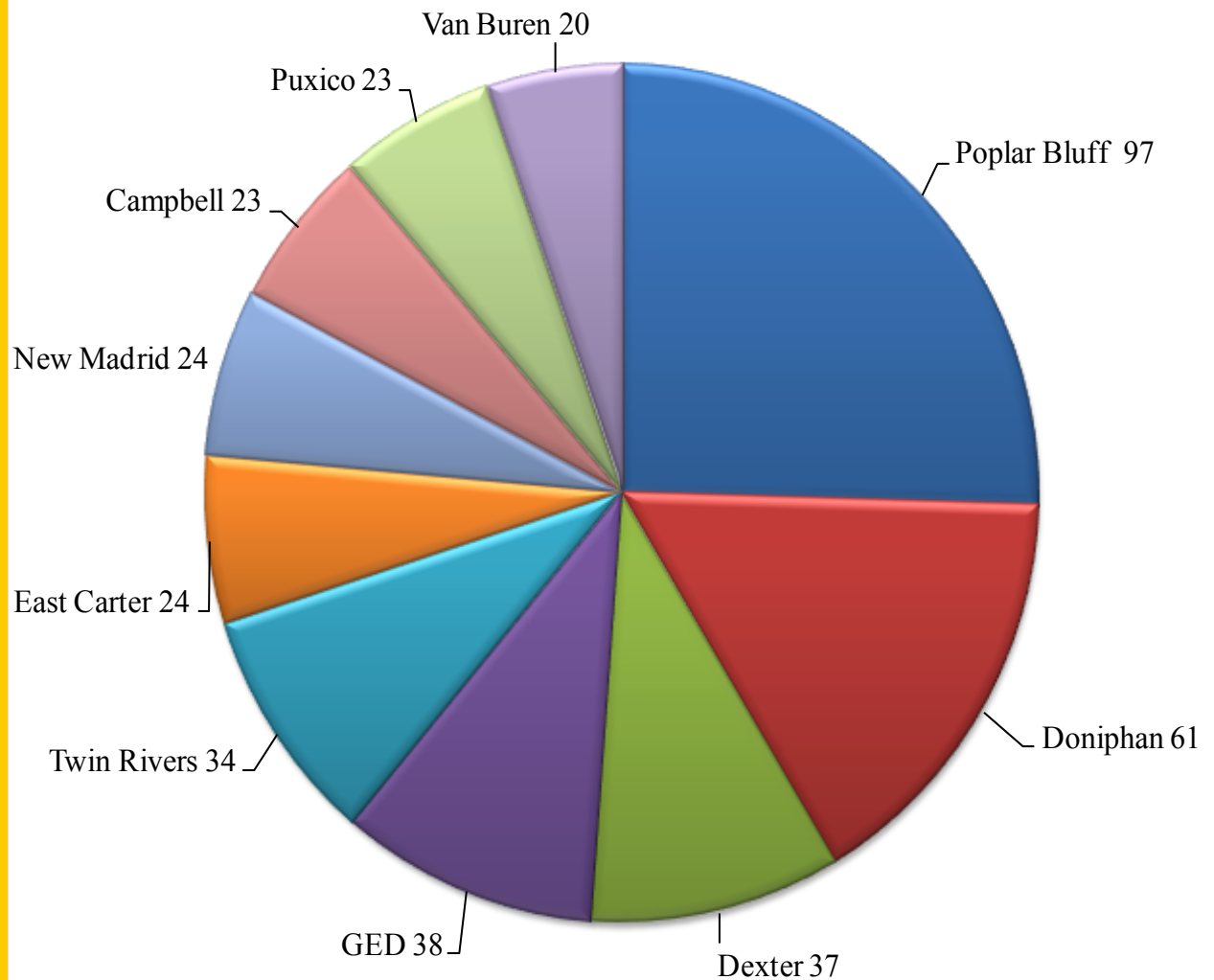


**Think Big...Dream Big**

# Recent High School Graduates by School

## Top 10 High Schools

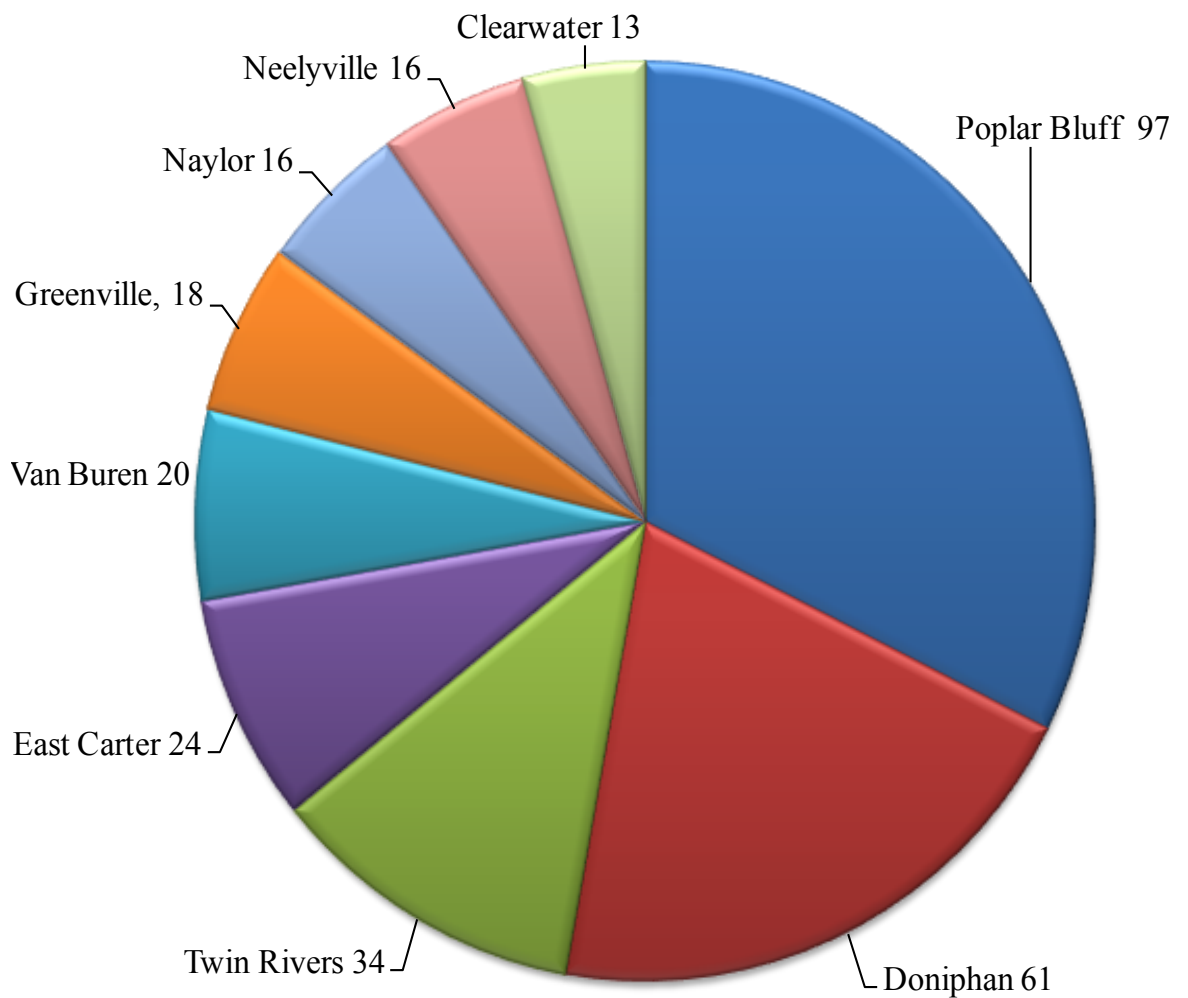
May 2009 High School Graduates  
Enrolled in 09/Fall by High School



# Recent High School Graduates by School

## In-District High Schools

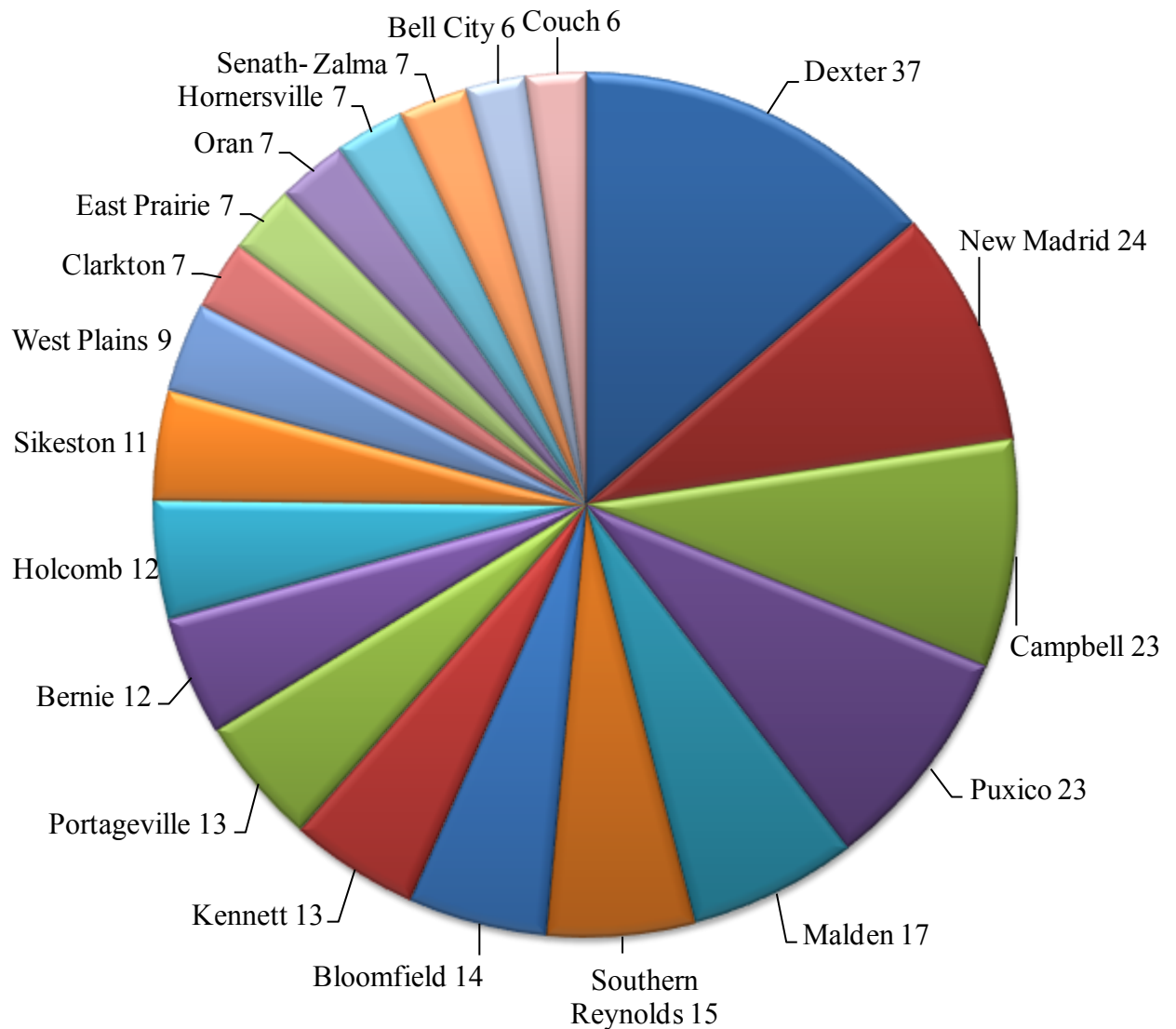
May 2009 High School Graduates  
Enrolled in 09/Fall by High School



# Recent High School Graduates by School

## Out-of-District High Schools

May 2009 High School Graduates  
Enrolled in 09/Fall by High School



# Recent High School Graduates by School

High School	Students
Poplar Bluff	97
Doniphan	61
Dexter	37
GED	38
Twin Rivers	34
East Carter	24
New Madrid	24
Campbell	23
Puxico	23
Van Buren	20
Greenville	18
Malden	17
Naylor	16
Neelyville	16
Southern Reynolds	15
Bloomfield	14
Clearwater	13
Kennett	13
Portageville	13
Bernie	12
Holcomb	12
Sikeston	11
West Plains	9
Clarkton	7
East Prairie	7
Oran	7
Senath-Hornersville	7
Zalma	7
Bell City	6
Couch	6
Advance	5
Chaffee	5
North Pemiscot	5
Piggott, AR	5
Richland	5
South Pemiscot	5
Alton	4
Charleston	4

High School	Students
Gideon	4
Hayti	4
South Iron	4
Corning, AR	3
Delta C-7	3
Kelly	3
Scott County Central	3
Cape Central	2
Caruthersville	2
Eminence	2
Forsyth	2
Hazelwood	2
Notre Dame	2
Thayer	2
Winona	2
Arcardia Valley	1
Ava	1
Camdenton	1
Crystal City	1
Delta R-5	1
Farmington	1
Glendale	1
Hartville	1
Hazelwood West	1
John F Hodge	1
Lakeland	1
Leopold	1
Marshall	1
North County Technical	1
Oregon-Howell	1
Risco	1
Rolla	1
Scott City R-1	1
Troy Buchanan	1
Willard	1
Woodland	1
Out of State	18
Other Missouri	5

# Recent High School Graduates by School

## In-District High Schools

Percentage of May 2009 High School  
Graduates from In-District High Schools  
Enrolled in 09/Fall

High School	# of 2009 Graduates Enrolled	# of 2009 Graduates	% of 2009 Graduates Enrolled	County
Neelyville	16	37	43%	Butler
Poplar Bluff *	97	262	37%	Butler
Twin Rivers *	34	78	44%	Butler
East Carter *	24	43	56%	Carter
Van Buren	20	40	50%	Carter
Doniphan	61	109	56%	Ripley
Naylor	16	26	62%	Ripley
Clearwater *	13	77	17%	Wayne
Greenville *	18	56	32%	Wayne

\* A+ School

# Recent High School Graduates by School

## Out-of-District High Schools

Percentage of May 2009 High School  
Graduates from Out-of-District High  
Schools Enrolled in 09/Fall

High School	# of 2009 Graduates Enrolled	# of 2009 Graduates	% of 2009 Graduates Enrolled	County
Campbell	23	52	44%	Dunklin
Clarkton *	7	30	23%	Dunklin
Holcomb	12	32	38%	Dunklin
Kennett *	13	109	12%	Dunklin
Malden *	17	78	22%	Dunklin
Senath-Hornersville	7	47	15%	Dunklin
Chaffee	5	49	10%	Scott
Kelly	3	78	4%	Scott
Oran	7	26	27%	Scott
Scott City R-1	1	64	2%	Scott
Scott County Central	3	24	13%	Scott
Sikeston *	11	196	6%	Scott
Advance	5	25	20%	Stoddard
Bell City *	6	29	21%	Stoddard
Bernie *	12	44	27%	Stoddard
Bloomfield *	14	50	28%	Stoddard
Dexter	37	101	37%	Stoddard
Puxico *	23	60	38%	Stoddard
Richland	5	36	14%	Stoddard

# Recent High School Graduates by School

## Out-of-District High Schools

Percentage of May 2009 High School  
Graduates from Out-of-District High  
Schools Enrolled in 09/Fall

High School	# of 2009 Graduates Enrolled	# of 2009 Graduates	% of 2009 Graduates Enrolled	County
Leopold	1	23	4%	Bollinger
Woodland *	1	63	2%	Bollinger
Zalma	7	14	50%	Bollinger
Camdenton *	1	330	0%	Camden
Cape Central *	2	286	1%	Cape
Delta R-5	1	23	4%	Cape Girardeau
Notre Dame	2	132	2%	Cape Girardeau
Ava *	1	124	1%	Douglas
Willard *	1	249	0%	Greene
Lakeland	1	43	2%	Henry
West Plains *	9	252	4%	Howell
Arcardia Valley *	1	74	1%	Iron
South Iron *	4	30	13%	Iron
Crystal City *	1	81	1%	Jefferson
Troy Buchanan	1	392	0%	Lincoln
Charleston *	4	50	8%	Mississippi
East Prairie	7	64	11%	Mississippi
Gideon *	4	28	14%	New Madrid
New Madrid	24	113	21%	New Madrid
Portageville	13	67	19%	New Madrid
Risco	1	14	7%	New Madrid



# Recent High School Graduates by School

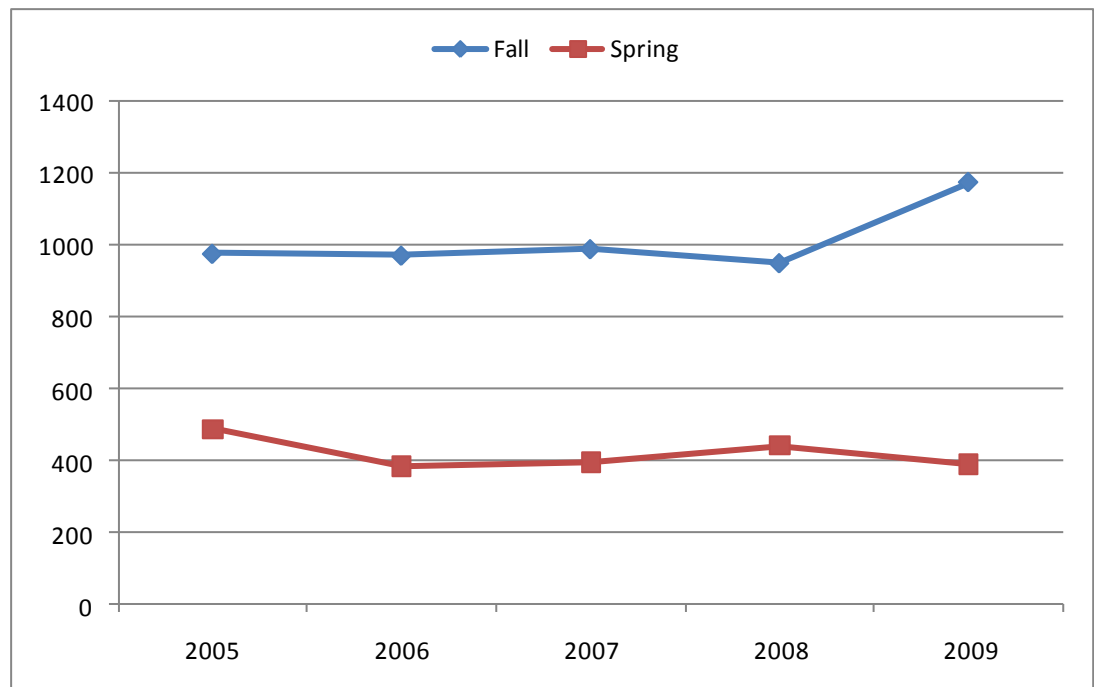
## Out-of-District High Schools

Percentage of May 2009 High School  
Graduates from Out-of-District High  
Schools Enrolled in 09/Fall

High School	# of 2009 Graduates Enrolled	# of 2009 Graduates	% of 2009 Graduates Enrolled	County
Alton *	4	55	7%	Oregon
Couch *	6	32	19%	Oregon
Oregon-Howell *	1	30	3%	Oregon
Thayer *	2	44	5%	Oregon
Caruthersville *	2	57	4%	Pemiscot
Delta C-7	3	18	17%	Pemiscot
Hayti	4	47	9%	Pemiscot
North Pemiscot	5	28	18%	Pemiscot
South Pemiscot	5	43	12%	Pemiscot
John F Hodge	1	115	1%	Phelps
Rolla *	1	337	0%	Phelps
Southern Reynolds	15	36	42%	Reynolds
Eminence	2	22	9%	Shannon
Winona *	2	39	5%	Shannon
Farmington *	1	270	0%	St. Francois
Glendale	1	392	0%	St. Louis
Hazelwood West *	1	575	0%	St. Louis
North County Technical	1	192	1%	St. Louis
Forsyth	2	81	2%	Taney
Corning, AR	3	90	3%	Arkansas
Piggott, AR	5	67	7%	Arkansas

# New Students

## Number of New Students by Term

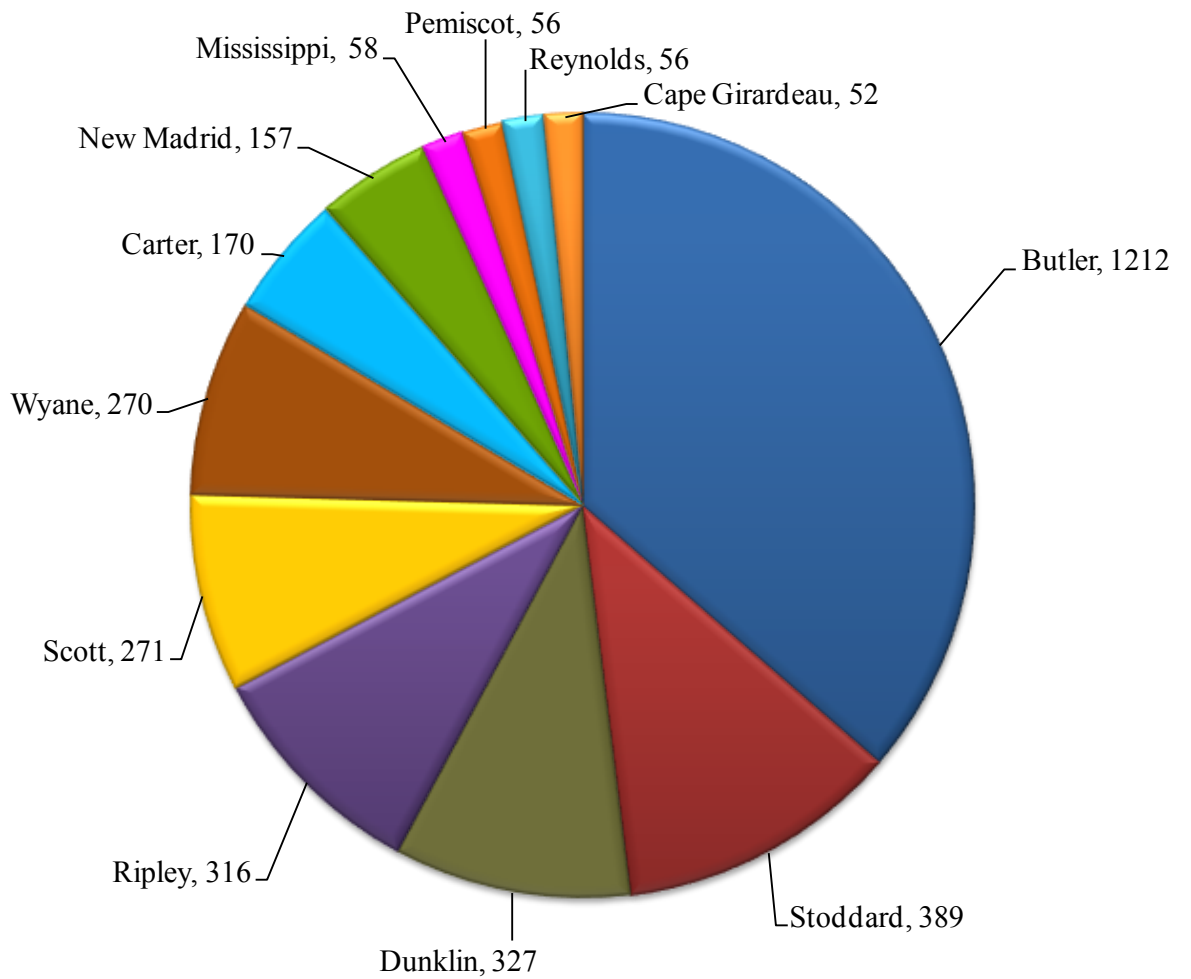


	2005	2006	2007	2008	2009
Fall	977	972	990	951	1177
Spring	489	384	395	443	390

# Total Student Body

## 09/Fall Students by County

### Top 12 Counties



# Total Student Body

## 09/Fall Students by County

County	Headcount
Butler	1212
Stoddard	389
Dunklin	327
Ripley	316
Scott	271
Wyane	270
Carter	170
New Madrid	157
Mississippi	58
Pemiscot	56
Reynolds	56
Cape Girardeau	52
Clay, AR	49
Oregon	27
Out of State	24
Howell	21
Bollinger	18
Shannon	12
Other Missouri Counties	49

# Total Student Body

## Headcount - Credit Hours - FTE

School Term	Headcount	Credit Hours	FTE	Unduplicated Headcount	Annual FTE
<b>2009-2010</b>					
09/Fall	3,534	37,519	2,501		
10/Winter	NA	NA			
10/Spring	NA	NA			
10/Summer	NA	NA			
Total		Incomplete		Incomplete	Incomplete
<b>2008-2009</b>					
08/Fall	3,120	33,191	2,213		
09/Winter	260	932			
09/Spring	3,023	31,659			
09/Summer	1,169	6,963			
Total		72,745		4472	2,425
<b>2007-2008</b>					
07/Fall	3,190	34,302	2,287		
08/Winter	227	790			
08/Spring	3,013	31,270			
08/Summer	1,132	6,312			
Total		72,674		4531	2,422
<b>2006-2007</b>					
06/Fall	3,002	31,112	2,074		
07/Winter	168	610			
07/Spring	2,896	29,673			
07/Summer	1,109	6,296			
Total		67,691		4323	2,256
<b>2005-2006</b>					
05/Pre-Fall	15	45			
05/Fall	2,939	30,048	2,003		
06/Winter	168	590			
06/Spring	2,709	27,803			
06/Summer	1,043	5,931			
Total		64,417		4227	2,147

Fall FTE is derived by dividing the total term hours by 15.

Annual FTE is calculated as the total hours divided by 30.

Figures in this table differ from IPEDS and DHE Reporting in that these numbers include "auditing" students.

# Total Student Body

## Gender

Gender	2005 Fall	2006 Fall	2007 Fall	2008 Fall	2009 Fall
Female	1953 66.45%	2061 68.65%	2148 67.34%	2073 66.44%	2313 65.45%
Male	986 33.55%	941 31.35%	1042 32.66%	1047 33.56%	1221 34.55%
Total	2939 100.00%	3002 100.00%	3190 100.00%	3120 100.00%	3534 100.00%

## Age

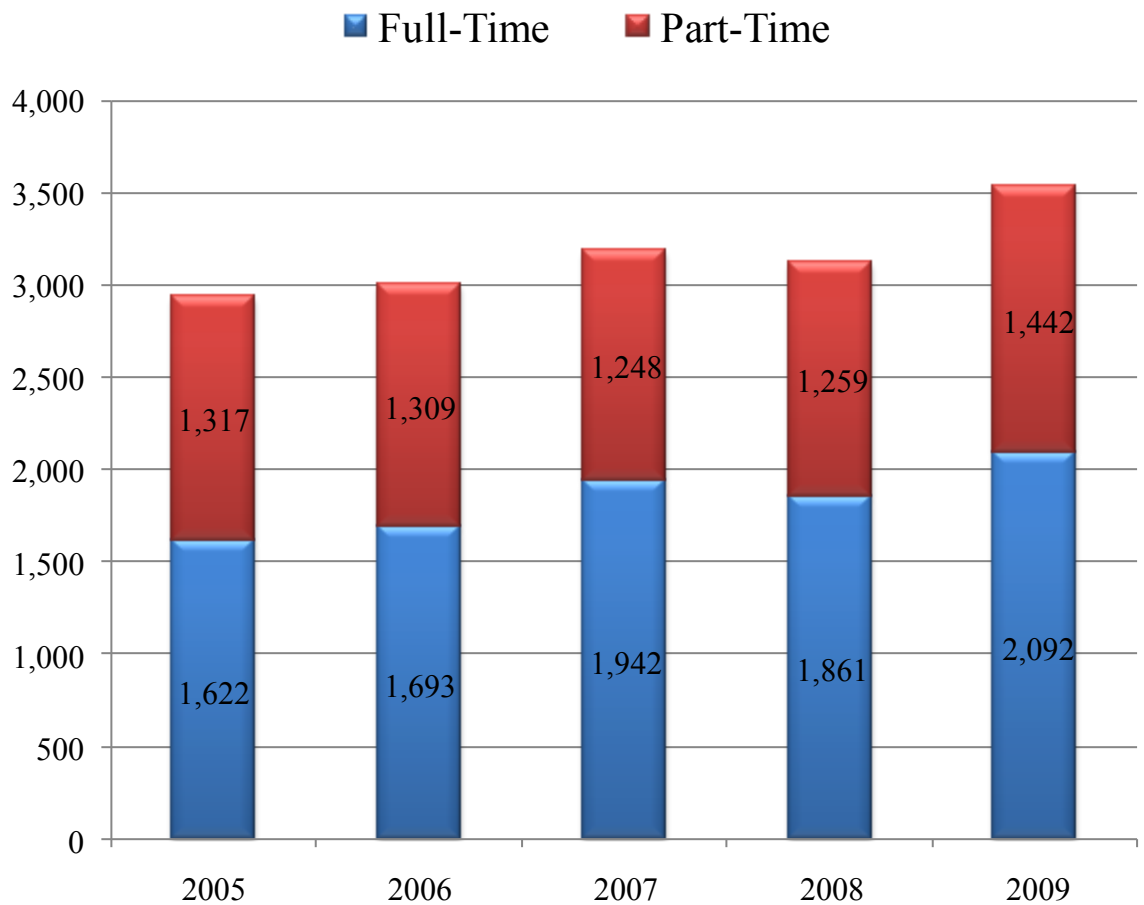
Age Group	2005 Fall	2006 Fall	2007 Fall	2008 Fall	2009 Fall
<20	1147 39.03%	1172 39.04%	1135 35.58%	1145 36.70%	1239 35.06%
20-24	684 23.27%	714 23.78%	819 25.67%	748 23.97%	929 26.29%
25-34	596 20.28%	613 20.42%	629 19.72%	613 19.65%	734 20.77%
35+	512 17.42%	503 16.76%	607 19.03%	614 19.68%	632 17.88%
Total	2939 100.00%	3002 100.00%	3190 100.00%	3120 100.00%	3534 100.00%
Average Age	26	25	26	26	26

## Race and Ethnicity

Ethnicity	2005 Fall	2006 Fall	2007 Fall	2008 Fall	2009 Fall
Black	230 7.83%	210 7.00%	221 6.93%	261 8.37%	317 8.97%
Indian/Alaskan	16 0.54%	15 0.50%	19 0.60%	14 0.45%	17 0.48%
Asian	16 0.54%	14 0.47%	15 0.47%	16 0.51%	14 0.40%
Hispanic	23 0.78%	35 1.17%	33 1.03%	46 1.47%	43 1.22%
White	2640 89.83%	2673 89.04%	2846 89.22%	2751 88.17%	3116 88.17%
Unknown	14 0.48%	55 1.83%	56 1.76%	32 1.03%	27 0.76%
Total	2939 100.00%	3002 100.00%	3190 100.00%	3120 100.00%	3534 100.00%

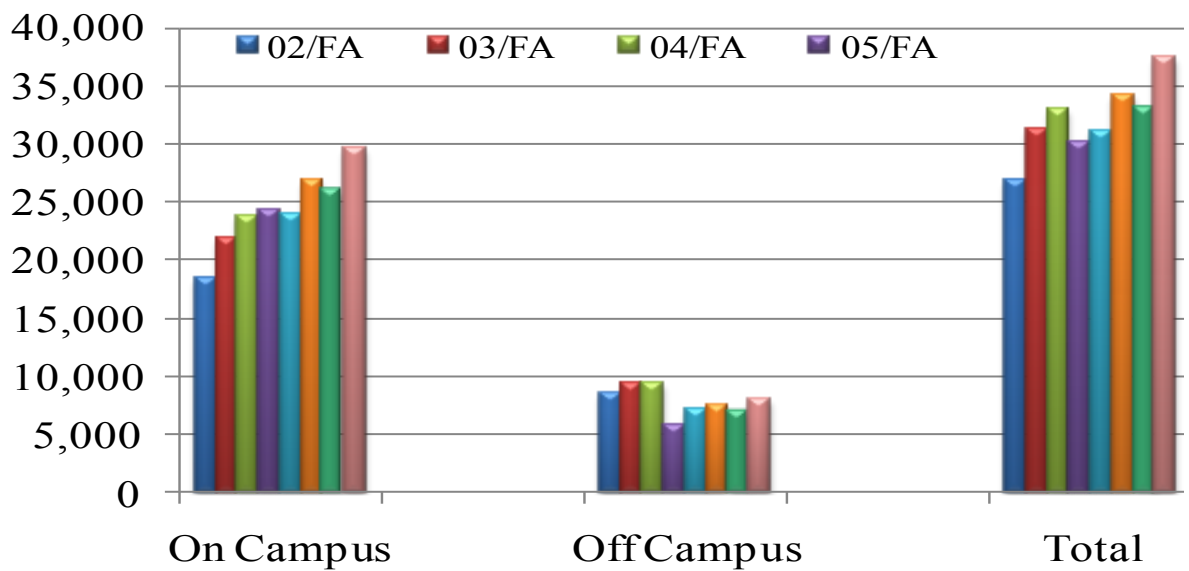
# Total Student Body

## Full-Time and Part-Time Headcount



# Credit Hours for Fall Sessions

## Total Credit Hours

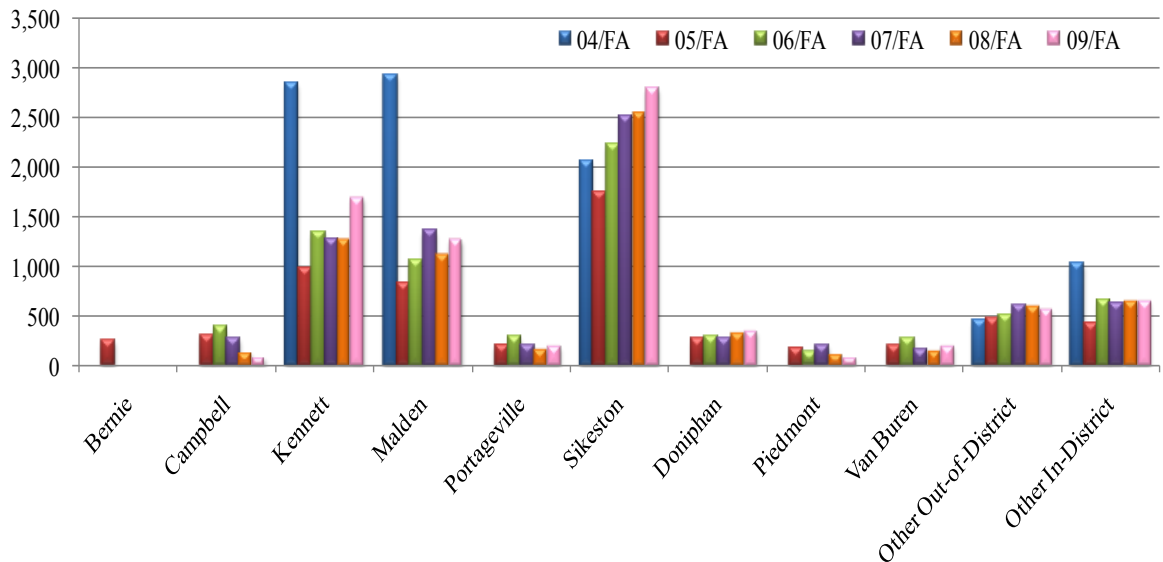


	On Campus	Off Campus	Total
02/FA	18,388	8,412	26,800
03/FA	21,907	9,357	31,264
04/FA	23,689	9,354	33,043
05/FA	24,230	5,818	30,048
06/FA	23,960	7,152	31,112
07/FA	26,872	7,430	34,302
08/FA	26,069	7,122	33,191
09/FA	29,582	7,937	37,519



# Credit Hours for Fall Sessions

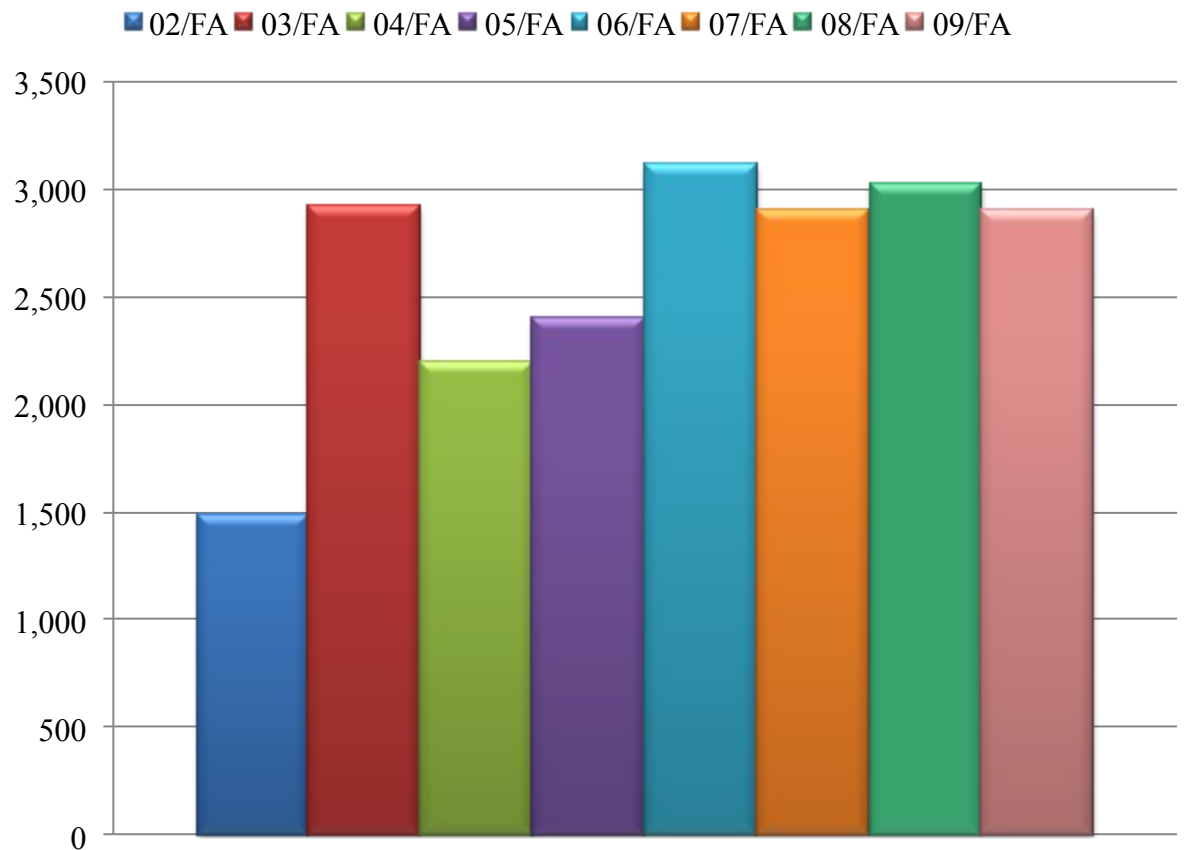
## Off-Campus Courses



	04/FA	05/FA	06/FA	07/FA	08/FA	09/FA
Bernie		252				
Campbell		297	379	270	138	87
Kennett	2843	968	1342	1265	1282	1,697
Malden	2937	823	1056	1352	1131	1,275
Portageville		211	286	205	169	203
Sikeston	2060	1747	2232	2505	2539	2,796
Doniphan		264	288	272	339	357
Piedmont		177	129	195	114	90
Van Buren		195	270	153	153	204
Other Out-of-District	456	462	510	598	606	568
Other In-District	1025	423	660	615	651	660

# Credit Hours for Fall Sessions

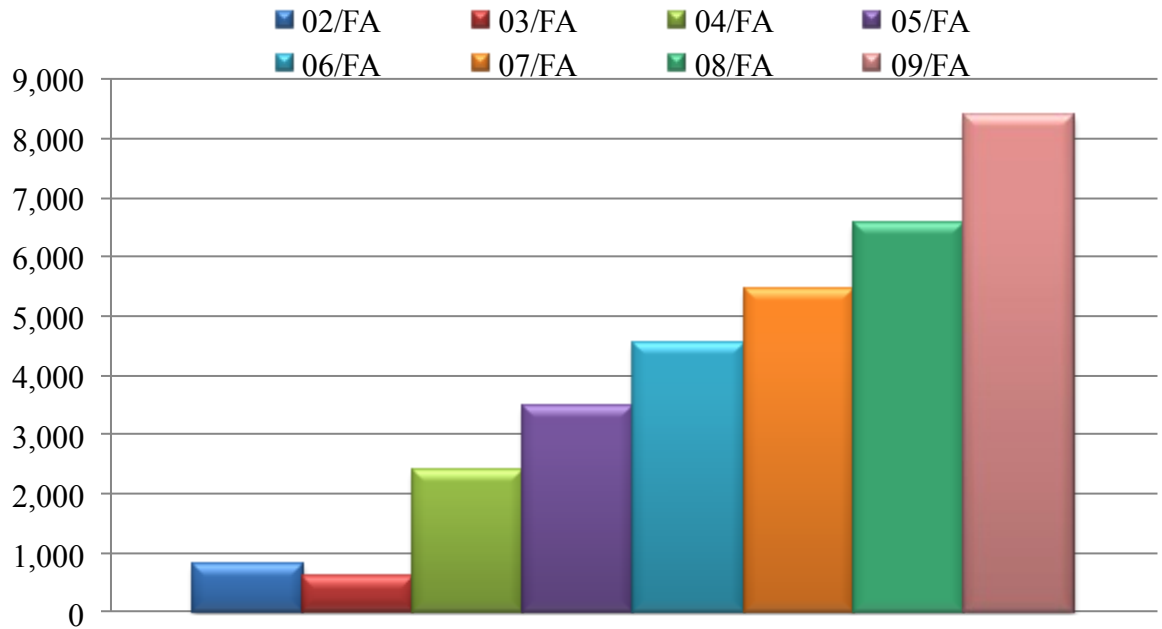
## ITV Courses



	02/FA	03/FA	04/FA	05/FA	06/FA	07/FA	08/FA	09/FA
Credit Hours	1,479	2,918	2,195	2,400	3,117	2,900	3,028	2,907
Sections Offered	118	110	116	147	172	173	169	134

# Credit Hours for Fall Sessions

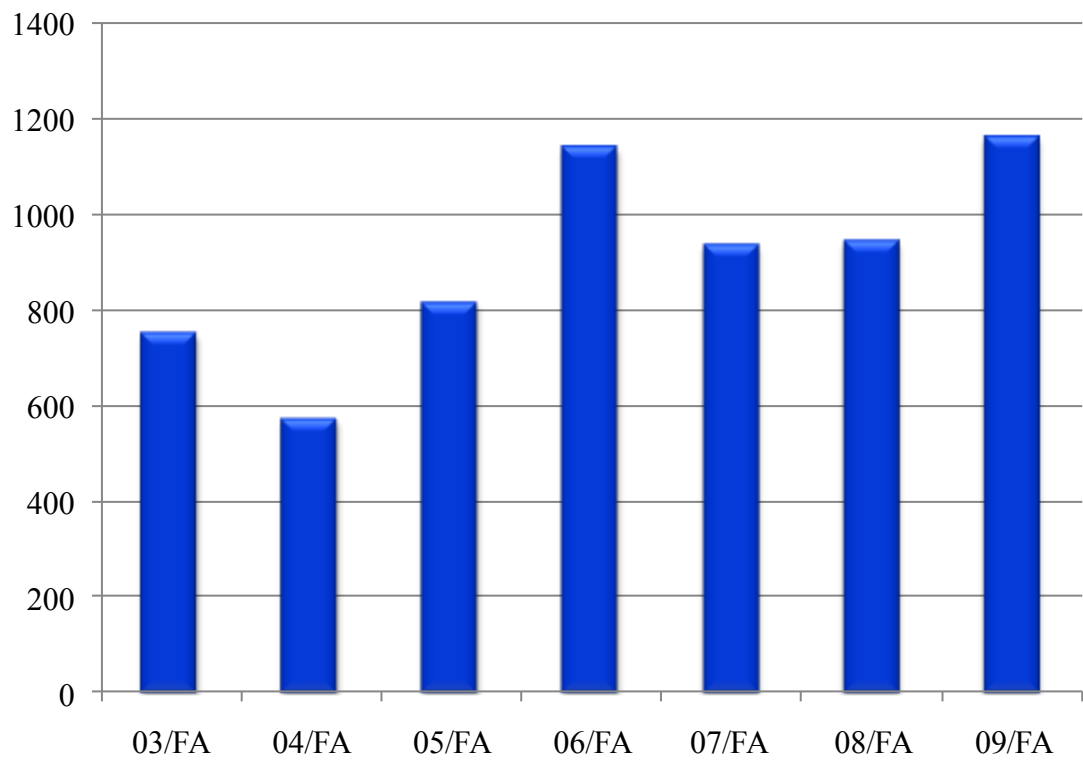
## Web Courses



	02/FA	03/FA	04/FA	05/FA	06/FA	07/FA	08/FA	09/FA
Credit Hours	814	584	2,379	3,466	4,541	5,442	6,568	8,391
Sections Offered	12	20	26	41	55	74	96	107

# Credit Hours for Fall Sessions

## Dual Credit Courses



	03/FA	04/FA	05/FA	06/FA	07/FA	08/FA	09/FA
Credit Hours	750	573	816	1,140	936	945	1,161

# Census Comparisons

## Percentage Change in Credit Hours at each Location

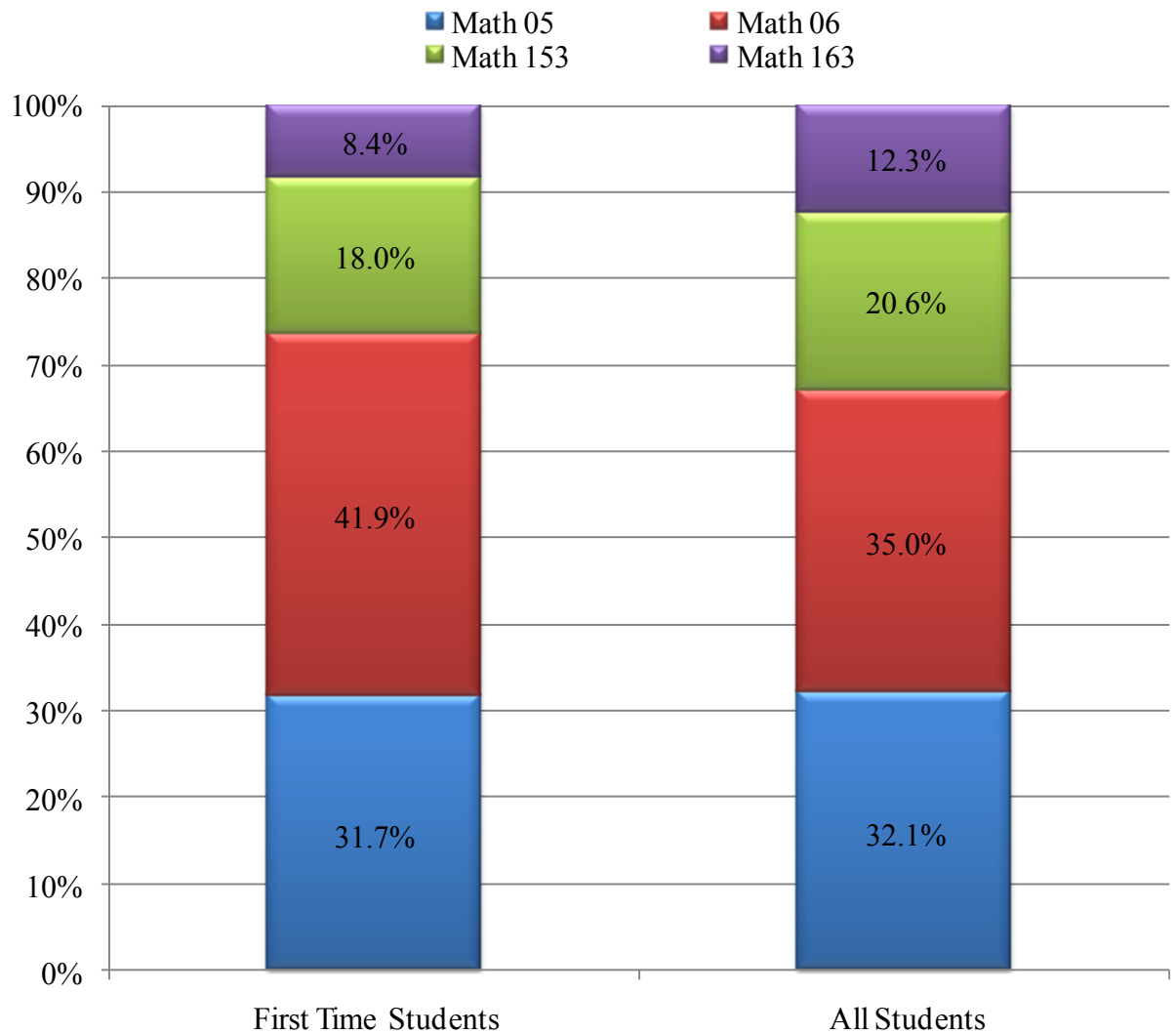
	Percentage Change in Credit Hours 05/Fall to 06/Fall	Percentage Change in Credit Hours 06/Fall to 07/Fall	Percentage Change in Credit Hours 07/Fall to 08/Fall	Percentage Change in Credit Hours 08/Fall to 09/Fall
<u>ON-CAMPUS</u>				
Regular On-Campus	-7.22%	12.26%	-10.55%	9.57%
ITV-on campus	6.93%	-19.28%	24.63%	-5.43%
Web	31.02%	19.84%	20.69%	27.76%
<u>TOTAL ON-CAMPUS</u>	-1.11%	12.15%	-2.99%	13.48%
<u>OFF-CAMPUS</u>				
<u>Out of District Locations</u>				
Bernie Center	-100.00%			
Campbell Center	27.61%	-28.76%	-48.89%	-36.96%
Kennett Center	38.64%	-5.74%	1.34%	32.37%
Malden Center	28.31%	28.03%	-16.35%	12.73%
Portageville Center	36.19%	-28.32%	-17.56%	20.12%
Sikeston Center	27.76%	12.23%	1.36%	10.12%
Other Out of District	10.39%	17.25%	1.34%	-6.27%
<u>In-District Locations</u>				
Doniphan Center	9.09%	-5.56%	24.63%	5.31%
Piedmont Center	-27.12%	51.16%	-41.54%	-21.05%
Van Buren Center	38.46%	-43.33%	0.00%	33.33%
Other In District	56.03%	-6.82%	5.85%	1.38%
<u>TOTAL OFF CAMPUS</u>	22.93%	3.89%	-4.15%	11.44%
<u>TOTAL REGISTERED</u>	3.54%	10.25%	-3.24%	13.04%

05/Fall was the first Fall term with the new centers.

# Placement Scores

## ACT and Compass Scores of all Students Compared to First Time Students

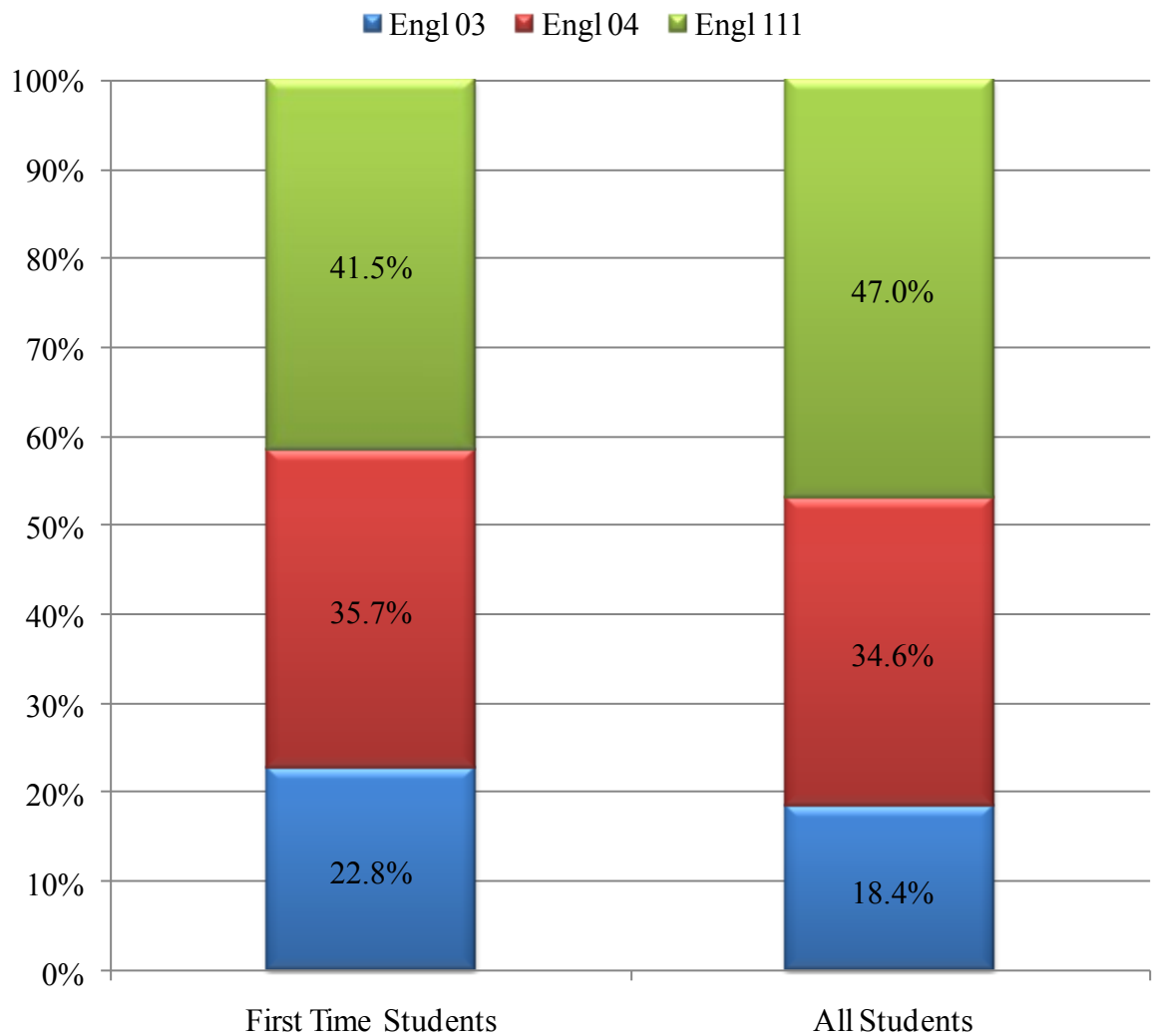
### Math



# Placement Scores

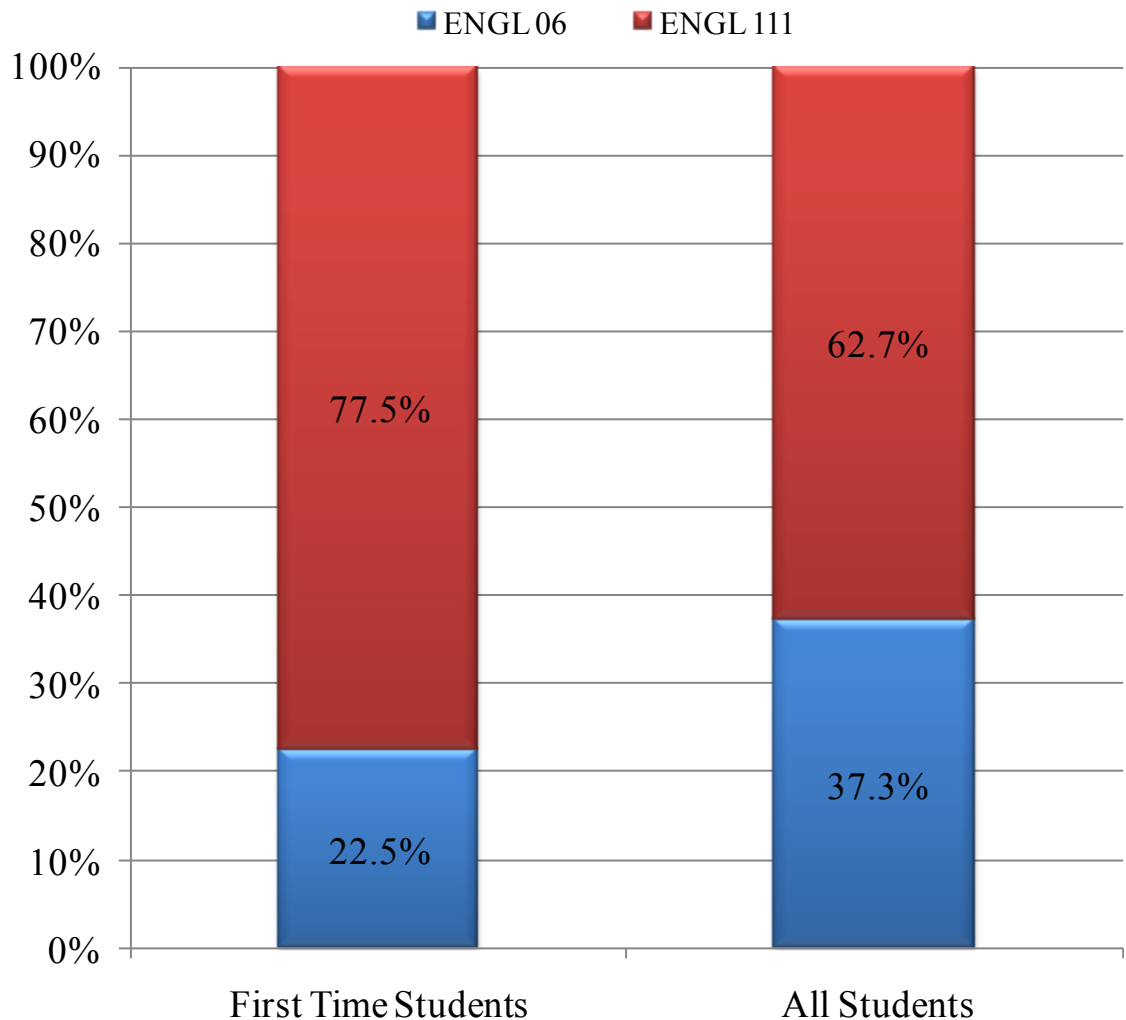
## ACT and Compass Scores of all Students Compared to First Time Students

### English



# Placement Scores

## ACT and Compass Scores of all Students Compared to First Time Students Reading





# Students by Major

## 09/Fall Students by Academic Program

Description	Program	CIP Code	Total
Agribusiness	AAS.AGBU	10201	16
Agritechnology	AAS.AGTE	10201	<u>5</u>
			21
Forestry Technology	AAS.FRST	30511	<u>23</u>
			23
Microcomputer Supp Technology	AAS.IST.MST	110901	<u>43</u>
			43
Sci-Paraprofessional Educator	AAS.PPED	130101	<u>7</u>
			7
Occupational Education	AAS.OCED	131319	<u>2</u>
			2
Teaching-Elementary Education	AAT.ELEM	131399	154
Teaching-Middle School Education	AAT.MSED	131399	15
Teaching-Secondary Education	AAT.EDUC	131399	<u>65</u>
			234
Electrical Technical Certificate	ETCERT	150303	<u>8</u>
			8
Applied Technology	AAS.TECH	150612	<u>3</u>
			3
Environ/Occ Safety & Health	AAS.EOSH	150701	17
Occupational Safety & Health Certificate	OSHTC	150701	<u>1</u>
			18
Quality Control technician Certificate	QTCERT	150702	<u>1</u>
			1
Surveying Certificate	SURVCERT	151102	<u>2</u>
			2
Microcomputer Support Technology Certificate	MST.CERT	151202	<u>1</u>
			1
Child Care and Guidance	AAS.CCG	190708	9
Early Childhood Development	AAS.ECD	190708	71
Early Childhood Development-1 year Certificate	CCGC	190708	<u>11</u>
			91

# Students by Major

## 09/Fall Students by Academic Program

Description	Program	CIP Code	Total
Agriculture	AA.AGRI	240101	37
Arts	AA.ARTS	240101	28
Biology	AA.BIOL	240101	18
Business Administration	AA.BUAD	240101	122
Business Education	AA.BUED	240101	4
Chemistry	AA.CHEM	240101	1
Speech Communications	AA.COMM	240101	1
Early Childhood Education	AA.ECED	240101	24
Secondary Education	AA.EDUC	240101	39
Elementary Education	AA.ELEM	240101	108
English	AA.ENGL	240101	7
Pre-Engineering	AA.ENGR	240101	25
Forestry	AA.FORS	240101	15
Forensic Science	AA.FRSC	240101	6
General Education	AA.GNED	240101	528
Political Science	AA.GOVТ	240101	4
History	AA.HIST	240101	12
Environmental Horticulture	AA.HORT	240101	2
Physical Education	AA.HPER	240101	18
Journalism	AA.JOUR	240101	16
Library Science	AA.LBSC	240101	1
Math	AA.MATH	240101	4
Mass Communication	AA.MCOM	240101	4
Pre-Medical Laboratory	AAS.PMEDL	240101	25
Pre-Medicine	AA.MEDI	240101	29
Mid-Level Elementary Arts & Social Science	AA.MLEL.ARTS/SOCSCI	240101	4
Middle School Education	AA.MSED	240101	9
Music	AA.MUSC	240101	31
Pre-Optometry	AA.OPTM	240101	2
Pre-Pharmacy	AA.PHAR	240101	15
Philosophy & Religion	AA.PHIL	240101	7
Physical Sciences	AA.PHYS	240101	4
Pre-Engineering	AS.PEGR	240101	5
Pre-Nursing	AA.PNUR	240101	470
Psychology	AA.PSYC	240101	73
			1698

# Students by Major

## 09/Fall Students by Academic Program

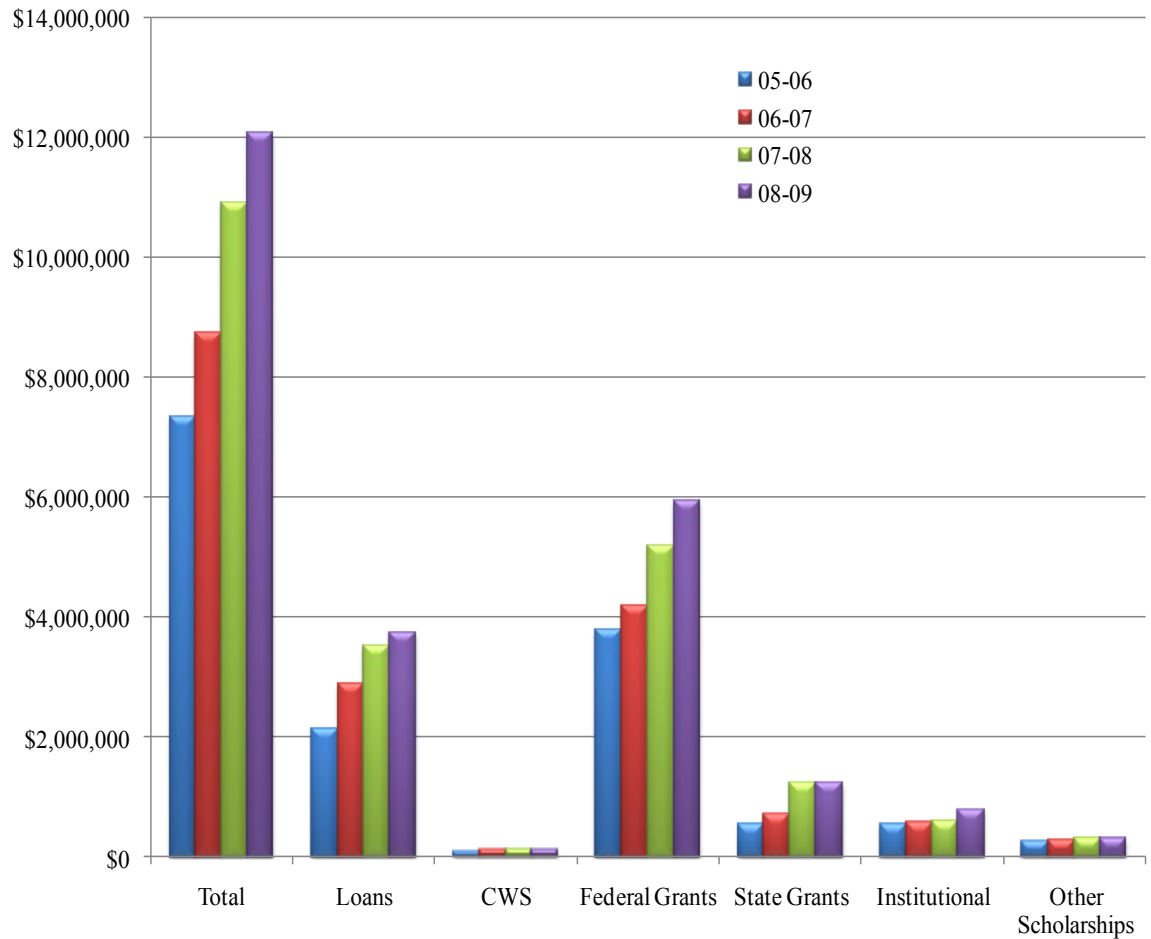
Description	Program	CIP Code	Total
Sociology	AA.SOCI	240101	11
Social Work for Southeast	AA.SOCIWRK	240101	27
Spanish	AA.SPAN	240101	2
Speech and Theatre	AA.SPDR	240101	2
Social Work Education	AA.SWRK	240101	60
Pre-Veterinary Medicine	AA.VETM	240101	16
			1816
Admin of Justice	AS.ADJU	430107	67
Criminal Justice - Corrections	AAS.CRJC	430107	1
Criminal Justice - Corrections	AAS.CRJU	430107	81
Law Enforcement	AS.LAW E	430107	1
Criminal Justice/Police Science	CRJUCERT	430107	3
			153
Industrial Technician	ITCERT	470105	4
			4
Industrial Maintenance	AAS.IND.MAINTEN	470303	4
Power Plant	AAS.IND.PPIT	470303	22
Civil & Construction	AAS.IND.TECCIVL	470303	24
Automated Manufacturing	AAS.IND.TECMAFT	470303	4
Drafting & Manufacturing	AAS.IND.TECMEDR	470303	8
			62
Auto Collision Option	AAS.DTEC.ACDT	479999	8
Auto Service Option	AAS.DTEC.ASDT	479999	6
Building Trades Option	AAS.DTEC.BTDT	479999	9
Culinary Arts Option	AAS.DTEC.CADT	479999	6
Computer Maintenance Option	AAS.DTEC.CMDT	479999	17
Cosmetology Option	AAS.DTEC.CTDT	479999	1
Drafting Technology Option	AAS.DTEC.DFDT	479999	1
Diesel Tech Option	AAS.DTEC.DIDT	479999	2
Graphic Communications Option	AAS.DTEC.GCDT	479999	12
HVAC Option	AAS.DTEC.HVDT	479999	9
Machine Tech Option	AAS.DTEC.MCDT	479999	3
Manufacturing Option	AAS.DTEC.MFDT	479999	1
Television/Radio Production Option	AAS.DTEC.TRDT	479999	3
Welding Option	AAS.DTEC.WEDT	479999	5
			83

# Students by Major

## 09/Fall Students by Academic Program

Description	Program	CIP Code	Total
Emergency Medical Services	AAS.PARA	510904	6
Emergency Medical Tech - Basic	EMDS-BASIC	510904	<u>4</u>
			10
Surgery Technology	CE.SURG	510909	<u>1</u>
			1
Medical Lab Technology	AAS.MDLB	511004	<u>24</u>
			24
LPN/AND Bridge Program	AAS.LPN/ADN	511601	37
Nursing	AAS.ADN	511601	<u>104</u>
			141
Management and Supervision Certificate	MGSCERT	520204	<u>2</u>
			2
Accounting Technology	AAS.ACTE	520302	61
Accounting Certificate	ACCTCERT	520302	<u>1</u>
			62
Info Sys Tech Microcomputer	AAS.IST.COMP	520401	14
Info Sys Tech Executive	AAS.IST.EXEC	520401	17
Info Sys Tech Legal	AAS.IST.LEGAL	520401	1
IST Medical Option	AAS.IST.MEDICAL	520401	28
Office Assistant Cert	IST.ONE-YEARCER	520401	<u>11</u>
			71
Info Systems Tech Automated Office Certificate	IST.AOCERT	520407	<u>3</u>
			3
Business Management	AAS.BMGT	521401	77
Business Management Evening	AAS.BMGTE	521401	9
Marketing	MMRCERT	521401	<u>1</u>
			87
Non-Degree Seeking	NONDEG	900000	207
Non-Degree Special Student	NONDEG.SPECIAL	900000	21
Non-Matriculating (Dual Credit)	NON.MATRIC	900000	<u>285</u>
			513

# Financial Aid Awarded



		Total	Loans	CWS	Federal Grants	State Grants	Institutional	Other Scholarships
05-06	Amount	\$7,329,205	\$2,123,977	\$89,052	\$3,781,556	\$540,581	\$539,061	\$254,978
	Students	2169	574	100	1572	354	399	311
06-07	Amount	\$8,727,803	\$2,892,182	\$110,680	\$4,180,164	\$700,873	\$560,197	\$283,707
	Students	2389	742	106	1741	399	370	285
07-08	Amount	\$10,913,430	\$3,514,600	\$114,625	\$5,170,220	\$1,220,984	\$586,171	\$306,830
	Students	2656	822	82	1945	679	352	342
08-09	Amount	\$12,082,350	\$3,736,060	\$110,549	\$5,932,970	\$1,219,366	\$779,447	\$303,958
	Students	2774	826	139	5	861	410	319

# Retention Rates

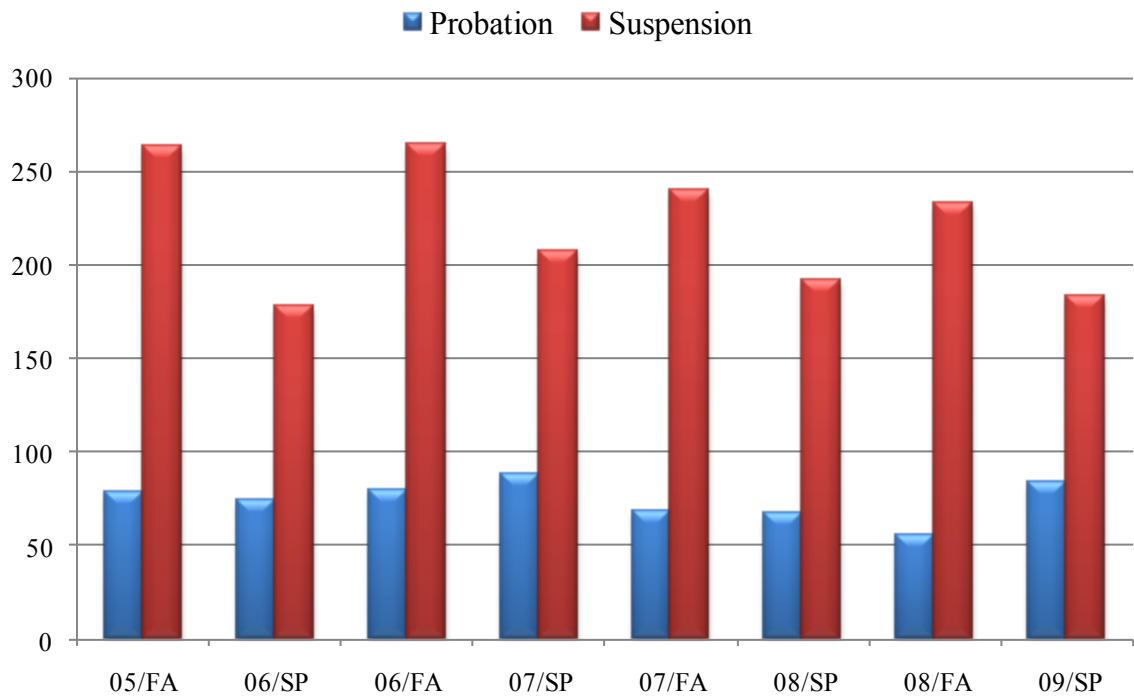
## Full-Time Students (less graduates) Who Enrolled the Following Fall Semester

	Cohort of Full Time Students	Number of Students Retained	Retention Rate
03/Fall - 04/Fall	1316	871	66%
04/Fall - 05/Fall	1327	781	59%
05/Fall - 06/Fall	1261	816	65%
06/Fall - 07/Fall	1302	899	69%
07/Fall - 08/Fall	1543	1006	65%
08/Fall - 09/Fall	1365	966	71%

# Student Outcomes

## Academic Suspension and Probation

Students with a GPA lower than 2.0 can be placed on academic suspension or probation depending on the number of credit hours earned.

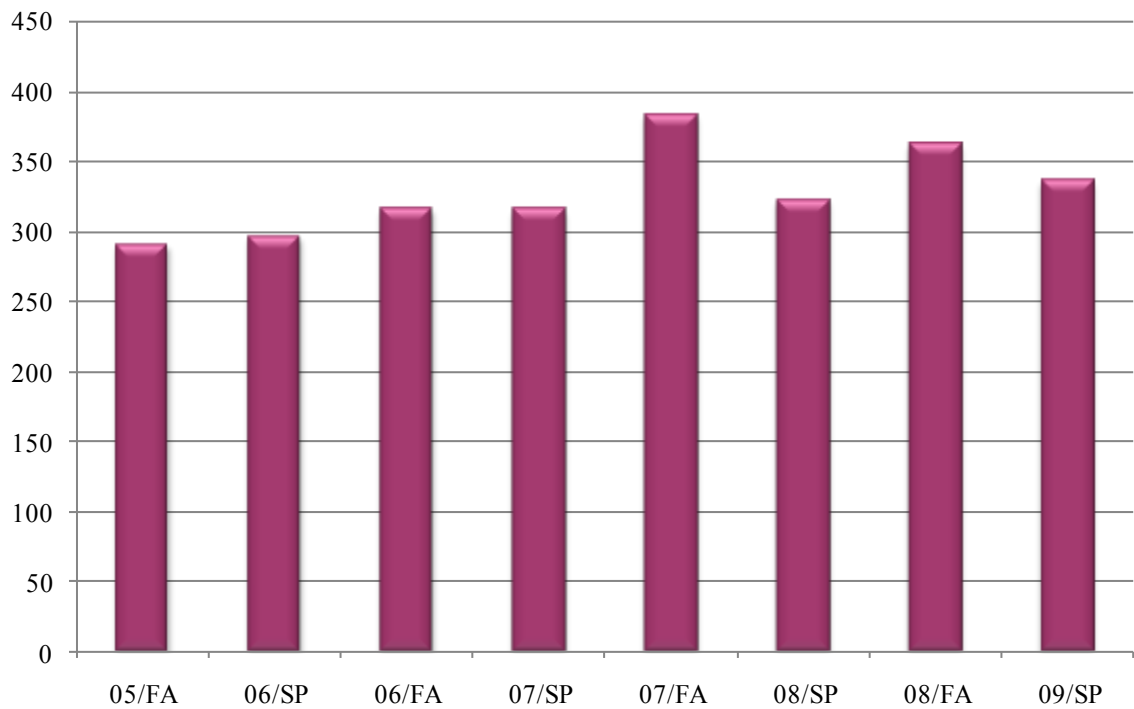


	05/FA	06/SP	06/FA	07/SP	07/FA	08/SP	08/FA	09/SP
Probation	78	74	79	88	68	67	55	83
Suspension	263	178	264	207	239	192	233	183

# Student Outcomes

## Dean's List

Students must be enrolled in 12 or more hours and earn a GPA of 3.5 for better to be on the Dean's List.



05/FA	06/SP	06/FA	07/SP	07/FA	08/SP	08/FA	09/SP
291	297	317	316	384	323	363	337

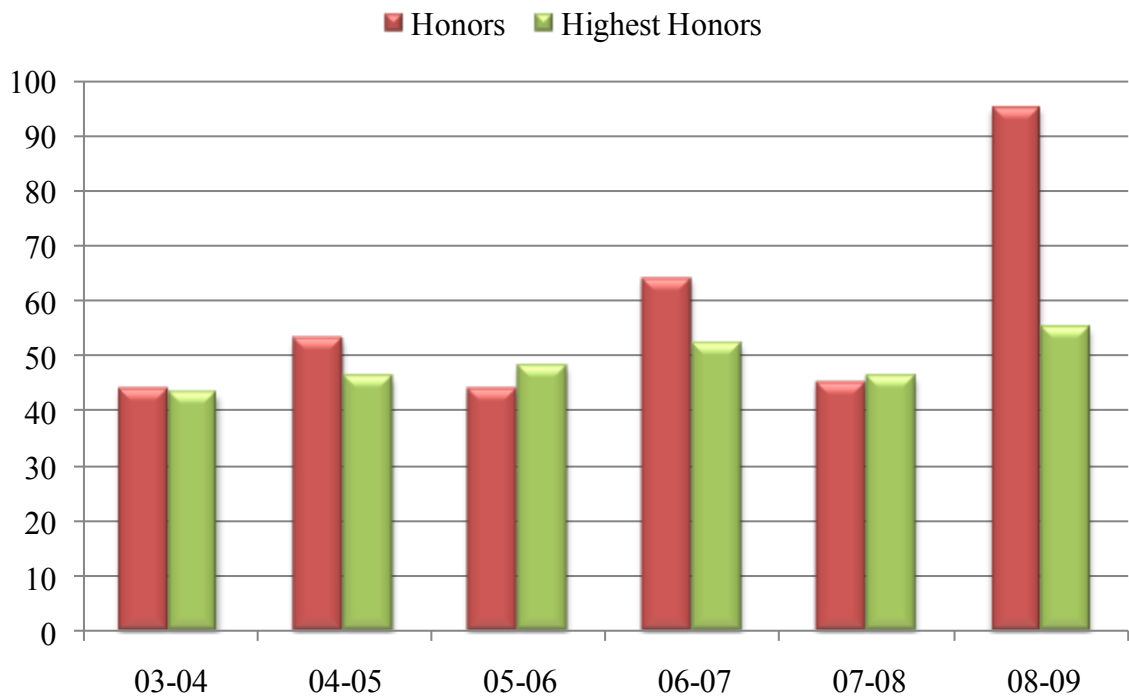


# Student Outcomes

## 2008-2009 Graduates with Honors

Students who graduate with an overall GPA of 3.5 or better graduate with Honors.

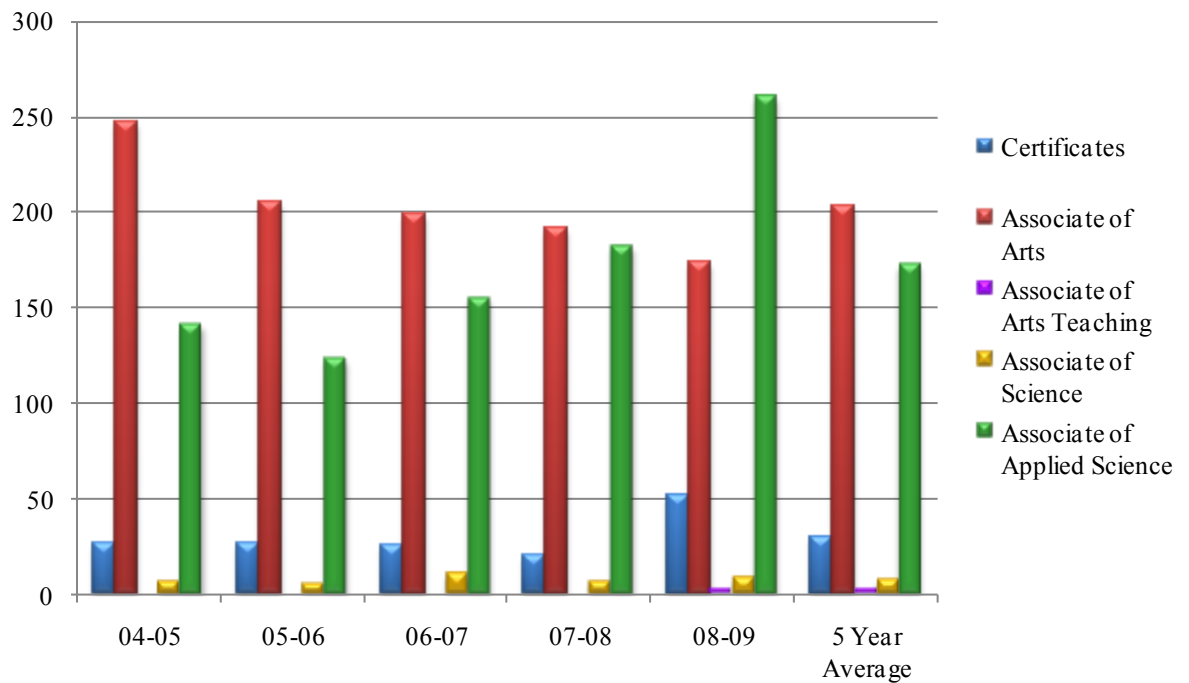
Students who graduate with an overall GPA of 3.75 or better graduate with Highest Honors.



	03-04	04-05	05-06	06-07	07-08	08-09
Honors	44	53	44	64	45	95
Highest Honors	43	46	48	52	46	55

# Awards Conferred

	04-05	05-06	06-07	07-08	08-09	5 Year Average
Certificates	26	26	25	20	51	30
Associate of Arts	247	205	199	191	174	203
Associate of Arts Teaching					2	2
Associate of Science	6	5	10	6	8	7
Associate of Applied Science	141	123	155	182	260	172
	420	359	389	399	495	414



# Awards Conferred

## 2008 - 2009

Description	Program	CIP Code	Total
Agribusiness	AAS.AGBU	10201	<u>3</u> 3
Forestry Technology	AAS.FRST	30511	<u>2</u> 2
Network Administration	AAS.IST.MST	110901	<u>8</u> 8
Paraprofessional Educator	AAS.PPED	130101	<u>1</u> 1
Occupational Education	AAS.OCED	131319	<u>1</u> 1
Secondary Education	AAT.EDUC	131399	1
Elementary Education	AAT.ELEM	131399	<u>1</u> 2
Electrical Technical Certificate	ETCERT	150303	<u>9</u> 9
Applied Technology	AAS.TECH	150612	<u>3</u> 3
Environ/Occ Safety & Health	AAS.EOSH	150701	11
Environ/Occ Safety & Health Certificate	EOSHCERT	150701	<u>1</u> 12
Quality Control Technician Certificate	QTCERT	150702	<u>3</u> 3
Surveying Certificate	SURVCERT	151102	<u>6</u> 6
Microcomputer Supp Technology Cert	MST.CERT	151202	<u>4</u> 4
Child Care and Guidance	AAS.CCG	190708	11
Early Childhood Development	AAS.ECD	190708	3
Early Childhood Development Certificate	CCGC	190708	<u>2</u> 16

# Awards Conferred

## 2008 - 2009

Description	Program	CIP Code	Total
Agriculture	AA.AGRI	240101	5
Art	AA.ARTS	240101	1
Biology	AA.BIOL	240101	1
Business Administration	AA.BUAD	240101	23
Chemistry	AA.CHEM	240101	2
Speech Communications	AA.COMM	240101	1
Secondary Education	AA.EDUC	240101	6
Elementary Education	AA.ELEM	240101	19
English	AA.ENGL	240101	2
Pre-Engineering	AA.ENGR	240101	2
Forestry	AA.FORS	240101	1
General Education	AA.GNED	240101	81
History	AA.HIST	240101	2
Physical Education	AA.HPER	240101	2
Pre-Medicine	AA.MEDI	240101	2
Middle School Education	AA.MSED	240101	2
Pre-Pharmacy	AA.PHAR	240101	1
Physical Sciences	AA.PHYS	240101	1
Pre-Law	AA.PLAW	240101	2
Pre-Sports Medicine	AA.PSPM	240101	2
Psychology	AA.PSYC	240101	5
Sociology	AA.SOCI	240101	3
Social Work Education	AA.SWRK	240101	8
			174

# Awards Conferred

## 2008 - 2009

Description	Program	CIP Code	Total
General Academic Studies Certificate	CERT.GN.STUDIES	240102	<u>1</u> 1
Admin of Justice	AS.ADJU	430107	8
Criminal Justice - Corrections	AAS.CRJU	430107	<u>10</u> 18
Industrial Technician Certificate	ITCERT	470105	<u>3</u> 3
Industrial Maintenance	AAS.IND.MAINTEN	470303	3
Power Plant	AAS.IND.PPIT	470303	8
Civil & Construction	AAS.IND.TECCIVL	470303	8
Manufacturing & Industrial Systems	AAS.IND.TECMAFT	470303	2
Drafting Technology	AAS.IND.TECMEDR	470303	<u>5</u> 26
Auto Service Option	AAS.DTEC.ASDT	479999	3
Building Trades Option	AAS.DTEC.BTDT	479999	2
Computer Maintenance Option	AAS.DTEC.CMDT	479999	5
Cosmetology Option	AAS.DTEC.CTDT	479999	1
Graphic Communication Option	AAS.DTEC.GCDT	479999	1
HVAC Option	AAS.DTEC.HVDT	479999	2
Welding Option	AAS.DTEC.WEDT	479999	<u>2</u> 16
Medical Lab Technology	AAS.MDLB	511004	<u>12</u> 12

# Awards Conferred

## 2008 - 2009

Description	Program	CIP Code	Total
LPN/ADN Bridge Program	AAS.LPN/ADN	511601	30
Nursing	AAS.ADN	511601	<u>43</u>
			73
Management & Supervision Certificate	MGSCERT	520204	<u>4</u>
			4
Accounting Technology	AAS.ACTE	520302	22
Accounting Certificate	ACCTCERT	520302	<u>2</u>
			24
Info Sys Tech Microcomputer	AAS.IST.COMP	520401	5
Info Sys Tech Executive	AAS.IST.EXEC	520401	9
Info Sys Tech Medical	AAS.IST.MEDICAL	520401	18
Info Sys Tech Office Assistant Certificate	IST.ONE-YEARCER	520401	<u>6</u>
			38
Info Sys Tech Automated Office Certificate	IST.AOCERT	520407	<u>1</u>
			1
Hospitality and Tourism Certificate	HSTCERT	520901	<u>3</u>
			3
Business Management	AAS.BMGT	521401	21
Business Management Evening	AAS.BMGTE	521401	5
Marketing and Merchandising Certificate	MMRCERT	521401	<u>3</u>
			29
Sales Certificate	SALCERT	521804	<u>3</u>
			3
	TOTAL		495

# On-Campus Facilities

Dr. H. Tudor Westover  
Administrative-Classroom Building

Nelson B.-Brent B. Tinnin  
Fine Arts Center

Harry L. Crisp Sr. Technology Center

Rivers Ridge Apartments

Ben & Martha Bidewell Fitness Center

Early Childhood Learning Center

Arrettia & Herschel Bess Activity Center

Arrettia & Herschel Bess Student Center

Rutland Library

E.K. Porter Distance Learning Center

College Bookstore & Gift Shop

Baseball Clubhouse

# Out-of-District Centers

Campbell Center  
330 South Locust  
Campbell, MO 63933

Kennett Center  
901C South By-Pass  
Kennett, MO 63857

Malden Center  
2203 Narvel Felts BLVD  
Malden, MO 63863

Portageville Center  
147 Highway T  
Portageville, MO 63873

Sikeston Center  
103 Kathleen  
Sikeston, MO 63801



# In-District Centers

Doniphan Site  
303 Spring Street  
Doniphan, MO 63935

Piedmont Site  
Route 4 Box 1004  
Piedmont, MO 63957

Van Buren Site  
202 W. College  
Van Buren, MO 63965

# Faculty & Staff

Number of Employees as of November 1 which is the date use for IPEDS Human Resources reporting.

	Full-Time			Part-Time		
06/Fall	Male	Female	Total	Male	Female	Total
Instruction	22	39	61	43	67	110
Total Faculty			61			110
Executive	3	0	3	0	1	1
Other Professionals	10	21	31	0	3	3
Total Professional Staff			34			4
Technical and paraprofessionals	2	6	8	6	10	16
Clerical and Secreterial	3	24	27	3	14	17
Service/Maintenance	14	2	16	10	1	11
Total Support Staff			51			44
Total Faculty and Staff			146			158
07/Fall	Male	Female	Total	Male	Female	Total
Instruction	21	39	60	56	73	129
Total Faculty			60			129
Executive	3	0	3	0	1	1
Other Professionals	11	23	34	0	3	3
Total Professional Staff			37			4
Technical and paraprofessionals	2	5	7	11	13	24
Clerical and Secreterial	3	27	30	5	18	23
Service/Maintenance	14	2	16	12	3	15
Total Support Staff			53			62
Total Faculty and Staff			150			195
08/Fall	Male	Female	Total	Male	Female	Total
Instruction	24	42	66			0
Total Faculty			66			0
Executive	3	1	4			0
Other Professionals	14	31	45	48	55	103
Total Professional Staff			49			103
Technical and paraprofessionals	4	5	9	7	9	15
Clerical and Secreterial	3	33	36	8	18	3
Service/Maintenance	14	2	16	15	3	18
Total Support Staff			61			36
Total Faculty and Staff			176			139

# Tuition

**2009 - 2010**

In-District Tuition	\$67.00
Out-of-District Tuition	\$107.00
Out-of-State Tuition	\$134.00

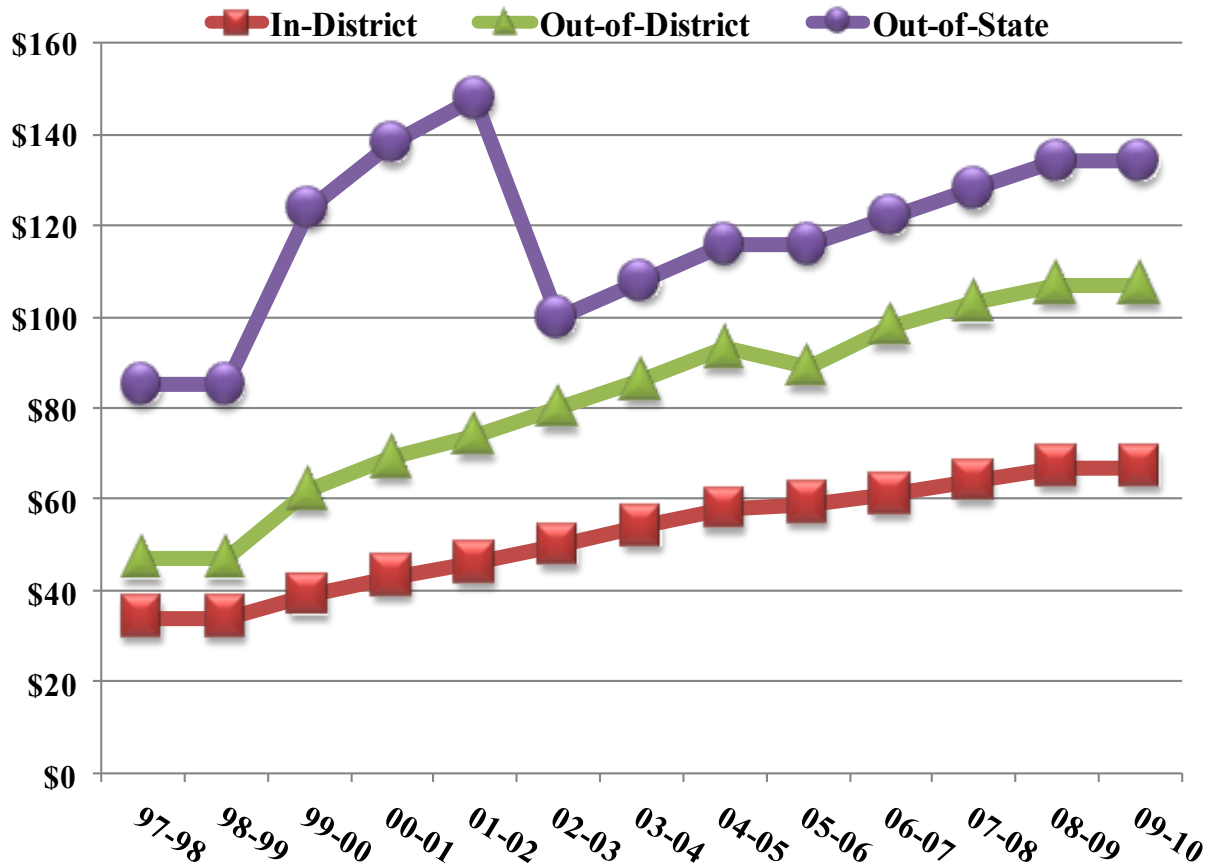
## In-District Counties

Butler  
Carter  
Ripley  
Wayne

## Out-of-District Counties

All other Missouri Counties and  
Clay and Randolph Counties  
in Arkansas.

# Tuition Comparison



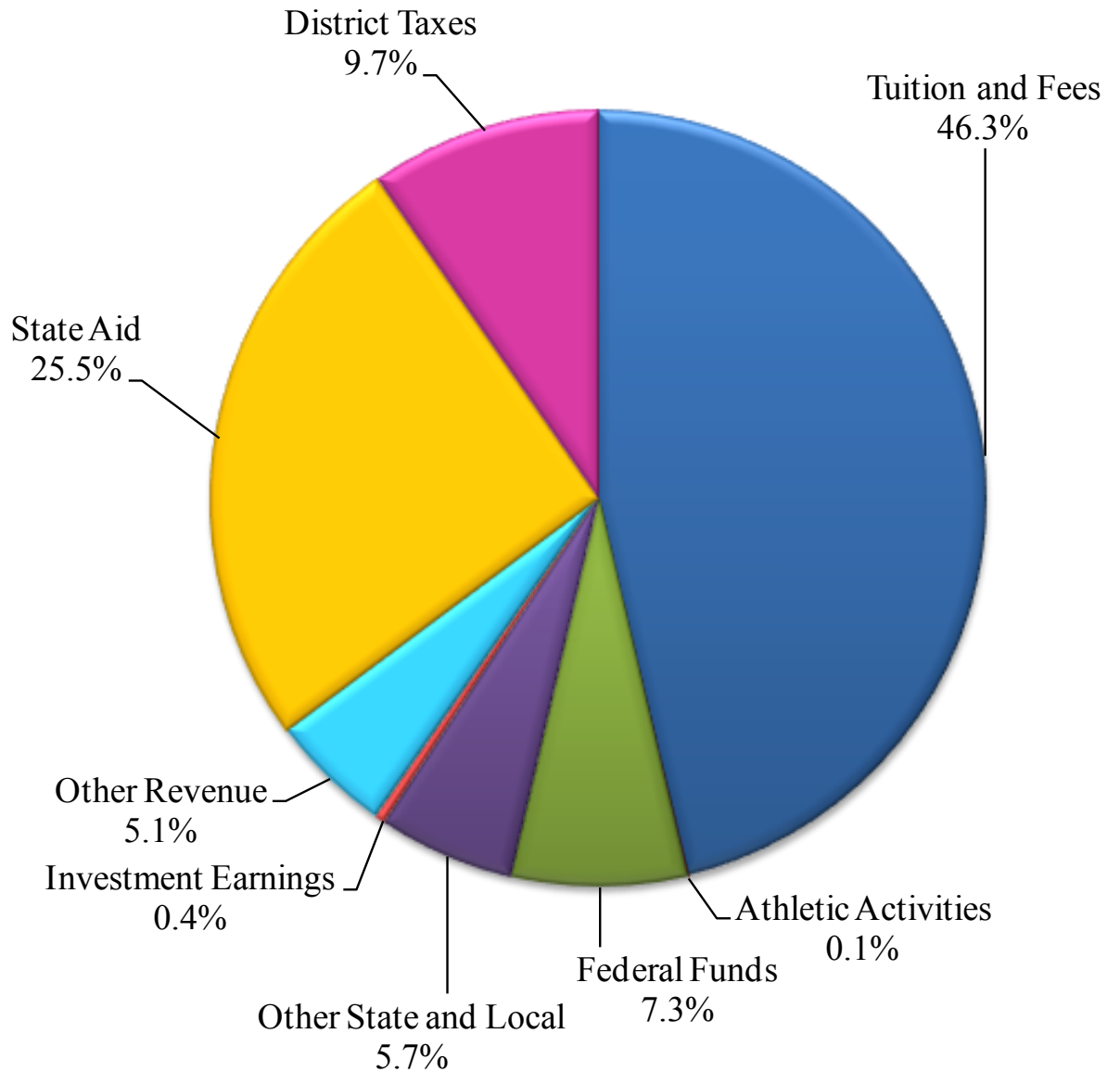
	97-98	98-99	99-00	00-01	01-02	02-03	03-04	04-05	05-06	06-07	07-08	08-09	09-10
<b>In-District</b>	\$34	\$34	\$39	\$43	\$46	\$50	\$54	\$58	\$59	\$61	\$64	\$67	\$67
<b>Out-of-District</b>	\$47	\$47	\$62	\$69	\$74	\$80	\$86	\$93	\$89	\$98	\$103	\$107	\$107
<b>Out-of-State</b>	\$85	\$85	\$124	\$138	\$148	\$100	\$108	\$116	\$116	\$122	\$128	\$134	\$134

# Institutional and Course Fees

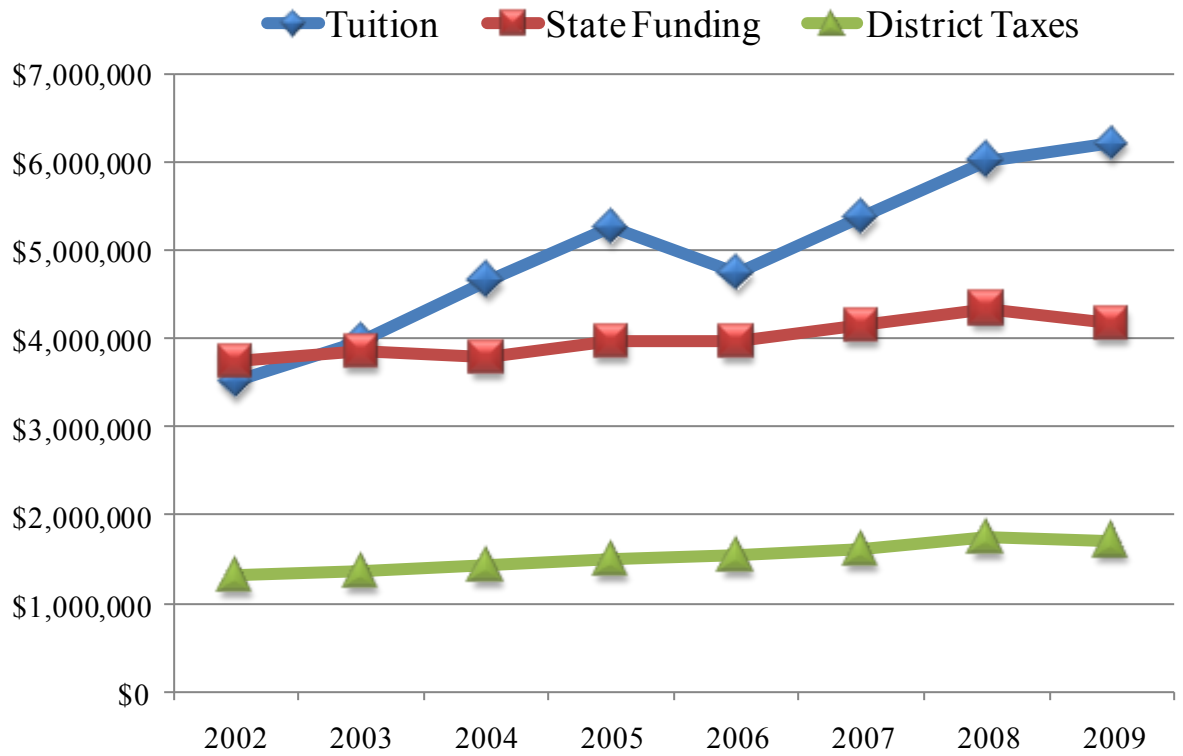
## 2009 - 2010

Application for Admission	
Fall 2009	\$20.00
Spring 2010	\$0.00
Applied Music Fee (per credit hour)	\$115.00
Calculator Rental Fee	\$20.00
Common Fee (per credit hour)	
Fall 2009	\$13.50
Spring 2010	\$17.00
DTEC fee (DTEC 215 course)	\$11.00
Graduation Fee	
December 2009	\$50.00
May 2010	\$0.00
Incomplete Grade Change	\$0.00
Math Technology Fee (Math web courses)	\$80.00
Nursing Course Fee (Nursing courses)	\$112.00
Physical Education Courses	
Bowling	\$20.00
Golf	\$10.00
Swimming	\$40.00
Schedule Change Fee	\$5.00
Textbook Rental Fee (per course)	\$20.00
Transcript Fee	\$5.00
Withdrawl Fee during 100% period	
Fall 2009	\$50.00
Spring 2010	\$0.00

# 2010 Estimated Revenue



# Revenue Comparison



	2002	2003	2004	2005	2006	2007	2008	2009
Tuition	\$3,518,830	\$3,973,962	\$4,657,629	\$5,265,464	\$4,747,277	\$5,377,756	\$6,021,377	\$6,209,088
State Funding	\$3,737,883	\$3,849,349	\$3,785,282	\$3,971,293	\$3,971,293	\$4,144,078	\$4,341,464	\$4,177,547
District Taxes	\$1,314,313	\$1,357,797	\$1,426,225	\$1,491,083	\$1,544,837	\$1,606,914	\$1,744,074	\$1,709,498

---

# Three Rivers Community College



Three Rivers Community College  
2080 Three Rivers Boulevard  
Poplar Bluff, MO 63901

Melanie Hamann  
Assistant System Administrator/  
Institutional Researcher  
573.840.9767  
mhamann@trcc.edu